



Princess Elizabeth Primary School

Subject-based Banding Briefing for Parents
20 Oct 2023
4pm to 5pm

From today's session, you will walk away with...

- A better understanding of the Subject-Based Banding at P4 level
- Understanding the PSLE scoring system
- Understanding the Full Subject-Based Banding (Full SBB) at Secondary Schools
- Information on Direct Schools Admission (Sec)



Our Mission

Together, we nurture
and inspire an
inclusive spirit



Our Vision

Every Child an
Engaged Learner, a
Caring Citizen, and a
Steadfast Leader

SUBJECT-BASED BANDING (PRIMARY)

OFFERING DIFFERENT SUBJECT COMBINATIONS



SUBJECT-BASED BANDING (PRIMARY)

- Subject-based Banding (Primary) provides greater flexibility for students by offering them the option of Standard and Foundation Subjects, depending on their strengths. This will allow students to focus on and stretch their potential in the subjects they are strong in while building up the fundamentals in the subject they need more support in.
- The new PSLE scoring system will not change the considerations for deciding on a student's subject combination.
- Schools will continue to recommend based on the following:
 - Student's aptitude, motivation and performance in each subject;
 - Student's ability to cope with a particular subject combination; and
 - Whether the subject combination focuses sufficiently on literacy and numeracy, and facilitates the student's articulation to secondary school and beyond.
- Offering subjects at Foundation level is not a disadvantage to the students. It enables them to focus on building up strong fundamentals in these subjects and better prepares them for progression to secondary school.

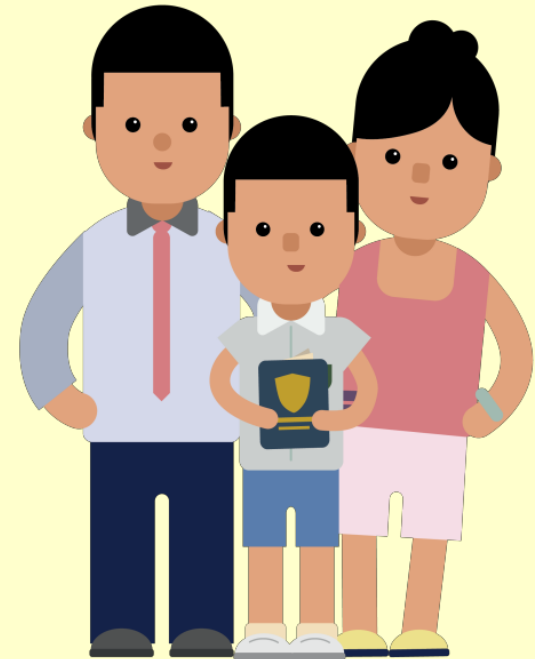
HOW DOES SUBJECT-BASED BANDING WORK?

@ PRIMARY 4

**Student sits for
school-based examinations**

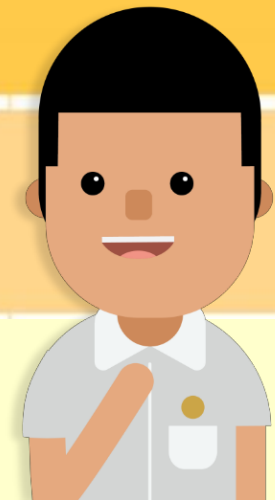
**School recommends a subject
combination based on the
student's results.**

**Parents fill up an option form
indicating the preferred combination.**



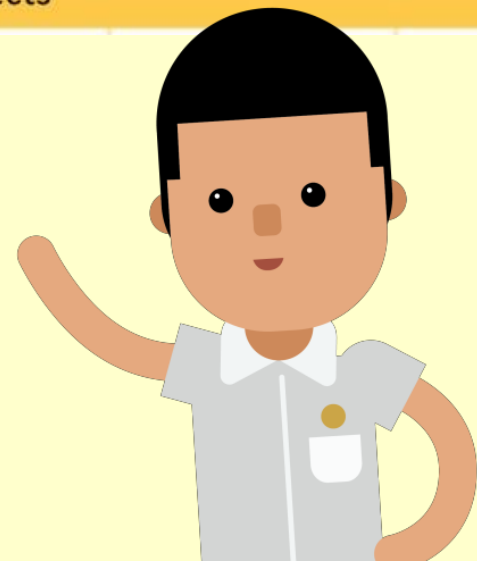
HOW DOES SUBJECT-BASED BANDING WORK?

If your child (for P4 exam)	Your child may be recommended to take
Passes all 4 subjects and performs very well in Mother Tongue Language	4 standard subjects + Higher Mother Tongue Language
Passes all 4 subjects	4 standard subjects
Passes 3 subjects	4 standard subjects



HOW DOES SUBJECT-BASED BANDING WORK?

If your child (for P ₄ exam)	Your child may be recommended to take
Passes 2 subjects or less	4 standard subjects; or
	3 standard subjects + 1 other foundation subject; or
	2 standard subjects + 2 other foundation subjects; or
	1 standard subject + 3 other foundation subjects; or
	4 foundation subjects

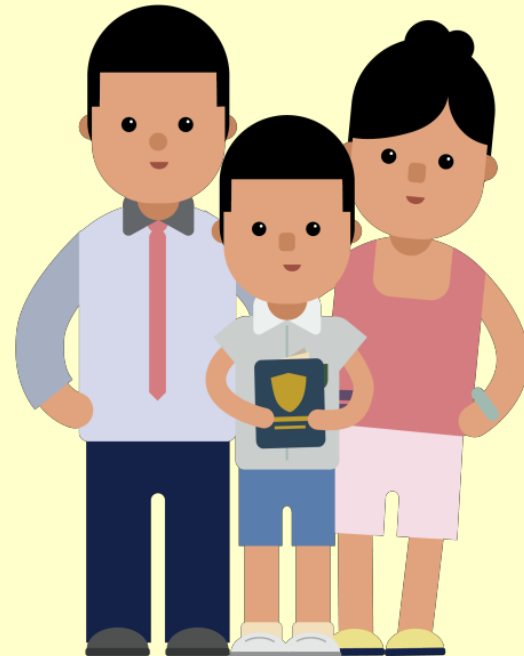


HOW DOES SUBJECT-BASED BANDING WORK?

@ PRIMARY 5

Student takes subject combination chosen by parents

School assesses student's ability to cope with the current subject combination at the end of the year. Adjustments to the number of standard and foundation subjects can be made, if necessary.



**P4 Students Opting for
Higher Mother Tongue
Languages (HMTL)
in P5/P6**

Syllabus for HMTL – Purchase of Books

Higher Chinese Language (HCL)	Higher Malay Language (HML)/ Higher Tamil Language (HTL)
<p><u>Purchase only HCL</u> textbooks/activity books</p> <p><u>Need not purchase CL</u> textbooks/ activity books</p>	<p><u>Purchase both</u></p> <ul style="list-style-type: none">• ML & HML textbooks & activity books• TL & HTL textbooks and activity books

Curriculum Hours for HMTL

Students taking HMTL are to attend **two periods (1 hour)** of HMTL lessons weekly **outside normal curriculum time**

Considerations for taking HMTL

- HMTL students are required to sit for both MTL and HMTL exams at PSLE
- Parents may also wish to consider the interest and strengths of the child when opting for HMTL
- If the student is doing well in English Language (EL), Mathematics (M), and Science(S) and is excelling in MTL, they will be recommended by the school to opt for HMTL for greater exposure and appreciation for the language
- If the student is unable to cope with English Language(EL), Mathematics(M), Science(S) and is not excelling in MTL, they will not be recommended by the school to opt for HMTL and are strongly advised to focus on (i) passing E,M,S (ii) do well for MTL.

Advantages of taking HMTL

- Achieve higher levels of language proficiency and cultural knowledge
- Higher chance of doing HMTL in secondary schools
- MTL is optional at JC level
- Career opportunities in future like MT teacher, translators at courts / parliament, etc...

Assessment Format :

Mother Tongue Language vs Higher Mother Tongue Language

MTL Assessment Format

Component		Weighting
Composition	Write an essay based on a given topic or Picture Composition	20%
Language Use and Comprehension	<ul style="list-style-type: none"> - Language Application(MCQ) - Cloze Passage(MCQ) - Reading Comprehension(MCQ) - Reading Comprehension (Open-ended) - Complete the dialogue(MCQ) 	45%
Listening Comprehension	After listening to dialogues, instructions, stories and news, answer MCQ	10%
Oral	Reading Aloud Conversation (after viewing a video stimulus)	25%

✗ **No Listening and Oral Components in HMTL assessment,**

Only Composition and Language Use

HMTL Assessment Format

Component		Weighting
Composition	Write an essay based on a given topic or Complete an essay based on a given beginning	40%
Language Use and Comprehension	<ul style="list-style-type: none"> - Cloze Passage(MCQ) - Word Correction(Open-ended) - Reading Comprehension(Open-ended) - Reading Comprehension(Open-ended) 	60%

Parent's Option for student to take HMTL







- Student should take the P5 HMTL curriculum till the end of the year

USE OF HCL FOR ADMISSION INTO SAP SCHOOLS



THIS HCL POSTING ADVANTAGE FOR ENTRY TO SAP SCHOOLS WILL CONTINUE

- Students will be ranked taking into account their performance in HCL
 - Their HCL performance will be indicated in their PSLE Score
- This posting advantage applies before the tie-breakers for S1 posting

				<u>PSLE Score</u>
1st		7	NO HCL	7
2nd		8	DISTINCTION	8D
3rd		8	MERIT	8M
4th		8	PASS	8P
5th		8	NO HCL	8
6th		9	DISTINCTION	9D

ELIGIBILITY CRITERIA FOR HIGHER MOTHER TONGUE LANGUAGE (HMTL)

- The eligibility criteria for taking HMTL ensures that students can cope with the higher academic load.

ELIGIBILITY CRITERIA FOR HMTL

(i) An overall PSLE Score of 8 or better

or

**(ii) An overall PSLE Score of 9 to 14 (inclusive); and
attain**

- **AL 1 / AL 2 in MTL or**
- **Distinction / Merit in HMTL**

- For students who do not meet the above criteria, secondary schools will have the flexibility to offer HMTL to students if they are assessed to have high ability and interest in MTL and are able to cope with the learning load required.

IN SUMMARY

HOW DOES SUBJECT-BASED BANDING WORK?

Pupil takes a subject combination determined by the school

End of P5

Pupils who do very well

Pupils who do not meet expectations

All other pupils

upgrade or continue with the same subject combination

switch some subjects to foundation level

continue with the same subject combination

Primary School Leaving Examination (PSLE)

End of P6

What happens at PSLE?

WHAT ARE ACHIEVEMENT LEVELs (AL)?

WHY ARE THE BANDS UNEVEN?

- Students with similar scores in each subject are grouped into scoring bands measured in 8 ALs.
- AL bands and mark ranges are set based on the learning objectives of the curriculum and mirror the way we learn.

When we learn something new, after some initial practice, we often find ourselves improving significantly.


As we get better, the improvements become small steps, and finally, as we reach a high level, we inch just a little further, even after much learning and practice.

The ALs were designed to reflect this reality of learning. They help educators, students, and parents know how ready students are to access the curriculum at the next level.

AL	RAW MARK RANGE
1	≥ 90
2	85 – 89
3	80 – 84
4	75 – 79
5	65 – 74
6	45 – 64
7	20 – 44
8	< 20

HOW DOES THE PSLE SCORING SYSTEM WORK?

- The overall PSLE Score is made up of 4 subject Achievement Levels (ALs).
- The PSLE Score can range from 4 to 32, with 4 being the best.



Elena		PSLE Score 14
PSLE Subject	AL Score	
English	2	
Math	2	
Foundation Science	ALA = 6	
Mother Tongue Language	4	

GRADING OF FOUNDATION SUBJECT GRADES

- Foundation subject grades are graded in scoring bands from **AL A to C**.
- To derive a student's overall PSLE Score for S1 Posting, AL A to AL C for Foundation level subjects are **mapped to AL 6 to AL 8 of Standard level subjects respectively**.
- This mapping is based on the learning and assessment load of the subjects and informs students of how ready they are for the curriculum in secondary school.

FOUNDATION LEVEL AL	FOUNDATION RAW MARK RANGE	EQUIVALENT STANDARD LEVEL AL
A	75 – 100	6
B	30 – 74	7
C	< 30	8

Timeline

2020

Start of Full SBB pilot in 28 secondary schools

2021

First cohort of Primary 6 students undergo new PSLE scoring and Secondary 1 (S1) posting system

2022-2024

Progressive roll-out of Full SBB to more secondary schools

2027

First cohort of students to sit for a common national examination, and receive a common national certification

2028

First cohort of students to be admitted to Post-Secondary Education Institutes (PSEIs) under revised admissions criteria

Removal of Express, Normal(Academic) [N(A)] and Normal(Technical) [N(T)] courses from 2024

- The Express, N(A) and N(T) courses will be removed
- Students posted into secondary schools through three scoring bands

Reference : <https://www.moe.gov.sg/microsites/psle-fsbb/full-subject-based-banding/secondary-school-experience.html>

From 2024, Full SBB will be implemented across secondary schools

Entering Secondary 1 Through Posting Groups

- Streams will be phased out and students will be posted to secondary schools through one of **three Posting Groups** – Posting Groups 1, 2, and 3.
- Posting Groups are used for the purpose of **facilitating entry into secondary school** and to guide the subject levels students take at the start of Secondary 1. Students will not be tagged to their Posting Group upon entry into secondary schools.
- Lower secondary form classes will have a **mix of student profiles** in each class. This will provide more opportunities for students to interact with friends of different strengths and interests.



Secondary School Experience: Greater Subject Level Flexibility

- In lower secondary, students will take **six common curriculum subjects** with peers from their form class. These subjects are Art, Character & Citizenship Education, Design & Technology, Food & Consumer Education, Music, and Physical Education.



- For the other subjects, students can take them at **different subject levels (i.e., G1, G2 or G3)** according to their strengths, interests and learning needs, throughout their secondary school journey.
- Eligible students can take some subjects at a **more or less demanding level** at appropriate junctures. Schools will advise students accordingly based on holistic considerations.

End of Secondary School: Common Singapore-Cambridge Secondary Education Certificate (SEC) and Option of Fifth Year

- From 2027, graduating students will sit for the **new Singapore-Cambridge SEC examinations**. They will receive the Singapore-Cambridge SEC, which will reflect their subjects and subject levels.
- Eligible students can continue with a **fifth year of secondary education** to pace their learning and take subjects at a more demanding level to access more post-secondary pathways.



FULL SBB: S1 POSTING

Three Posting Groups to ensure schools are accessible to diverse learners

From the 2024 S1 cohort, MOE will facilitate the admission of P6 students into S1 through 3 Posting Groups: **Posting Group 1, 2 and 3.**

Objective: Ensures that schools continue to admit a **diverse profile of students** and students have **access to a wide range of schools.**

Unlike the academic streams of Express, N(A) and N(T), Posting Groups will only be used for the purposes of facilitating entry into secondary school and to guide the subject levels students offer at the start of S1.

- Posting Groups assigned based on PSLE Scores, mapped from existing PSLE Score ranges for Express, N(A) and N(T) streams.
- PSLE Scores provide a good gauge of the subject levels that students can offer at the beginning of S1.

PSLE Score	Posting Group	Subject level for most subjects
4 – 20	3	G3
21 and 22	2 or 3	G2 or G3
23 and 24	2	G2
25	1 or 2	G1 or G2
26 – 30 (with AL 7 in EL and MA)	1	G1

SCORING OF FOUNDATION SUBJECTS FOR S1 POSTING

- A student's PSLE Score is the sum of the four AL scores across his/her Standard and Foundation subjects.
- With Full Subject-based Banding in secondary schools, students may also take subjects at a higher level for those that they are strong in.



ENGLISH AL3

FOUNDATION
MOTHER TONGUE ALB

FOUNDATION
MATHEMATICS ALB

SCIENCE AL5

PSLE SCORE: 22

SUBJECTS OFFERED AT SECONDARY LEVEL

Subjects offered under SBB(Sec)	Eligibility criteria		
	PSLE subject level	PSLE AL for the specific subject	Option to take the Secondary One subject at:
<ul style="list-style-type: none"> English Language Mother Tongue Languages Mathematics 	Standard	AL 5 or better	G3 or G2
		AL 6	G2
	Foundation	ALA	G2

Part 1 (PARENT'S COPY)**SCHOOL'S RECOMMENDATION ON PUPIL'S SUBJECT COMBINATION AT PRIMARY 5 (2024)**

Name of Student: _____ Register No. _____ Class: _____

- (1) Your child has completed four years of primary education. Based on his/her academic records and our assessment of his/her performance, we recommend that he/she takes the following subject combination in Primary 5 next year.

	Subject Combination	School's Recommendation (2023)	Parent's Option Tick (✓) 1 only
4S	English Language, Mathematics, Mother Tongue Language, Science		
4S 1H	English Language, Mathematics, Mother Tongue Language, Science, Higher Mother Tongue		
2S 2F (FMA & FSC)	English Language, Mother Tongue <u>Language</u> , Foundation Mathematics, Foundation Science		
2S 2F (FMA & FMTL)	English Language, Science, Foundation Mathematics, Foundation Mother Tongue Language		
3S 1FMA	English Language, Science, Mother Tongue Language, Foundation Mathematics		

Part 2 (SCHOOL'S COPY – submit on 15 November 2023)**PARENT'S OPTION ON PUPIL'S SUBJECT COMBINATION AT PRIMARY 5 (2024)**

Name of Student: _____ ID No. _____ Class: _____

1. I have taken note of the school's recommendation in **Part 1** and I ***support / do not support** the recommendation. *Please circle.

	Subject Combination	School's Recommendation (2023)	Parent's Option Tick (✓) 1 only
4S	English Language, Mathematics, Mother Tongue Language, Science		
4S 1H	English Language, Mathematics, Mother Tongue Language, Science, Higher Mother Tongue		
2S 2F (FMA & FSC)	English Language, Mother Tongue <u>Language</u> , Foundation Mathematics, Foundation Science		
2S 2F (FMA & FMTL)	English Language, Science, Foundation Mathematics, Foundation Mother Tongue Language		

Direct School Admission (DSA)

BRIEFING FOR P4 PARENTS
20 OCT 2023





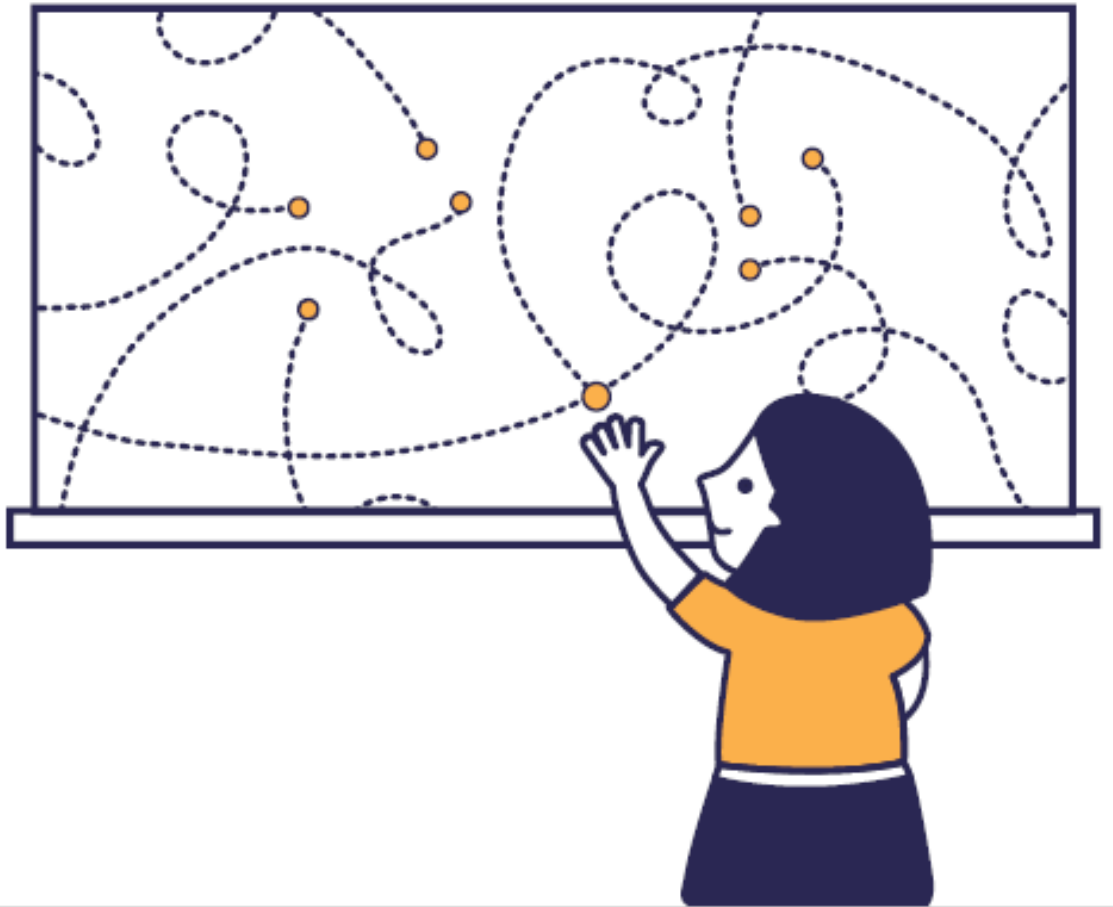
What is DSA-Sec?

DSA-Sec allows Primary 6 students an opportunity to seek admission to a secondary school based on a diverse range of talents and achievements that may not be demonstrated at the Primary School Leaving Examination (PSLE).



**Is DSA-Sec right for
my child?**

**You Have
Many Options**



1 Direct School Admission (DSA) Secondary

- DSA-Sec Exercise
1. Based on a **diverse** range of **talents** and **achievements** in **specific academic** subjects or **non-academic** areas, beyond what the PSLE recognizes
 2. Allow students to access school programmes to **develop** their talents

2 Primary School Leaving Examination (PSLE)

- Secondary One Posting Exercise* (S1 Posting)

Based on student's PSLE score;
Most students enter secondary schools this way

1. Mainstream Secondary Schools
2. Specialized Schools (eg Northlight)
3. IP (Integrated Schools)
4. Specialized Independent Schools



Ask why you want
your child to apply
to a **DSA School**

Talent

Does my child has specific
talents which a DSA-Sec
school offers?

Passion & Commitment

Is my child passionate
about and committed to
developing his/her
strengths and interests?



Ask Your Child:

Are You...

- always thinking about what you want to learn (in your area of interest) if you had more time?
- often looking for ways to learn what you are interested in.
- excited by and interested when engaging in the area you are interested in?
- very sure you would put in the effort & spend time in the chosen area (eg. arts or sports, etc)
- able to manage your time very well?



Visual,
literary
and
performing
arts

**CONFIDENT
LEARNERS
READY FOR
THE FUTURE**



Languages
and
humanities

Debate &
public
speaking



Sports and
games

Leadership:
e.g. prefects

Uniformed
groups



Science &
Mathematics

Art &
Music

**Which school should
my child apply to?**





I hear
School A has
an Innovation
programme...

Or what about
School B's
Robotics
programme?

I want to
build things!

... be sure that schools are looking out for students whose interest and talents they can **develop** further. So,

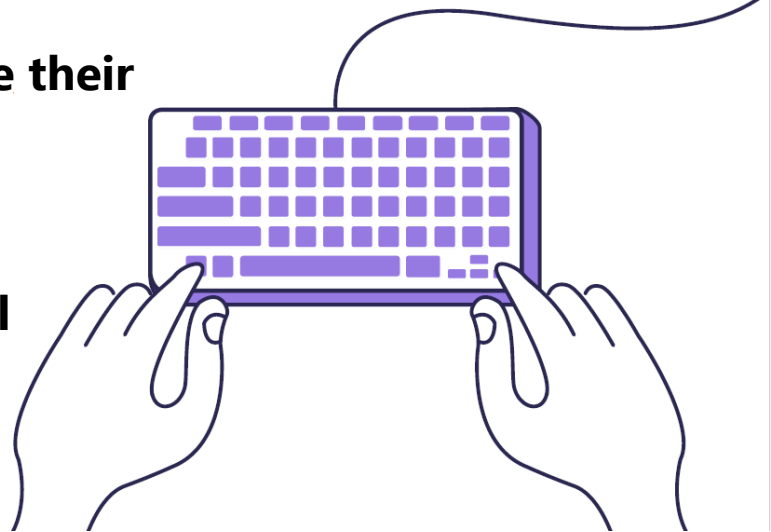
...

- Look for a school with programmes that **match** your child's **strengths and interest**
- Learn more about the secondary school's **pace of learning** and **range** of programmes
- Consider your child's overall **school experience**



Get the **latest** information about what each school offers by:

- Read all **notifications from** MOE on DSA
- Visiting the **school's websites**
- Attending school's **Open Houses** to experience their environments and cultures
- Visiting the **MOE DSA-Sec** website
- **WESTories**: An e-book with good stories of all secondary schools in the West Zone



What are schools looking for?

- Schools have updated their selection practices, which are based on common set of student-centric principles, with more emphasis on looking to sound fundamentals and potential in particular areas.
- The DSA-Sec selection process remains objective and talent-specific



What are schools looking for?

Schools are generally looking candidates with:

Talent, Passion & Commitment

- Schools may look at achievements and participation.
- Schools may also conduct trials or selection camps to identify students with strengths, or sound potential, in particular areas.

Strong Personal Qualities

- Schools may conduct interviews

Good Academic Fit

- Schools may look at primary school results to ensure students can benefit from the pace of learning.

*Encourage your child to be sincere, be genuine, be themselves –
If you are a good fit for the school, it will show.*

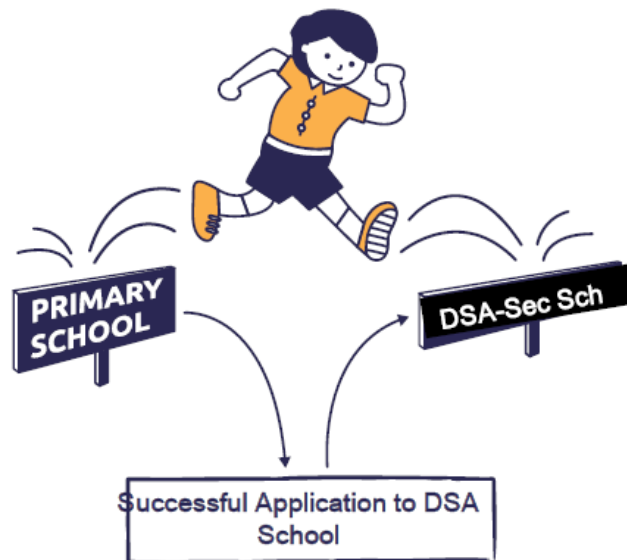
You must remember that ...

1. If your child is successfully allocated to a DSA-Sec school, he/she will **NOT** be allowed to participate in the annual S1 Posting to opt for secondary schools, and are expected to **honour the commitment** to the allocated DSA-Sec school for the **entire duration** of the programme to develop his/her talents.
2. Your child will also **NOT** be allowed to **transfer** to another school after the release of the PSLE results.



Reason?

- DSA is a commitment on the part of both the student and the secondary school. This is because the school is committed to developing students to their fullest potential in both their studies and talents throughout their school years.





Thank You

Let us work together so that our children can do their best,