

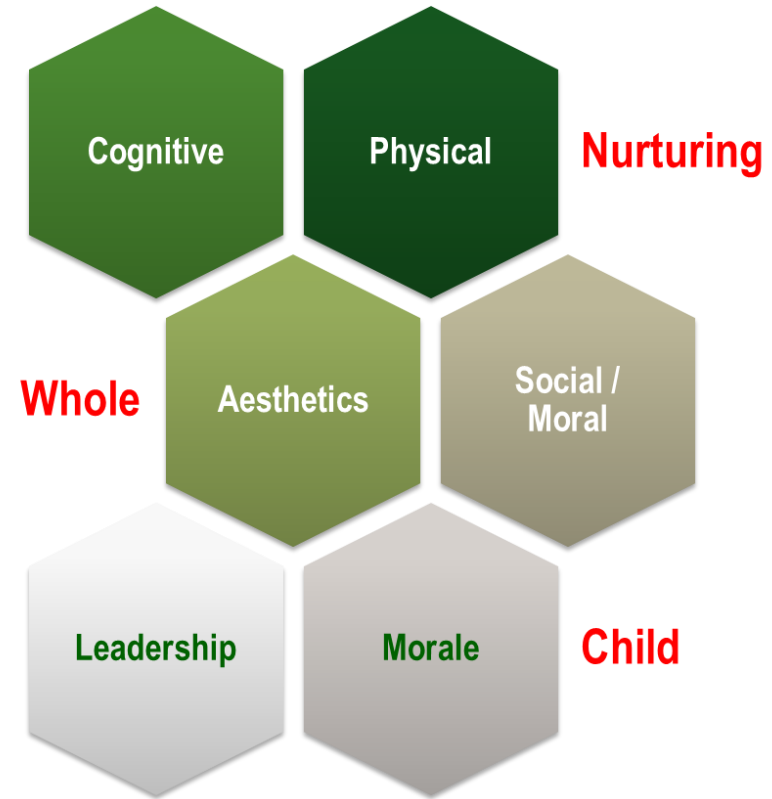
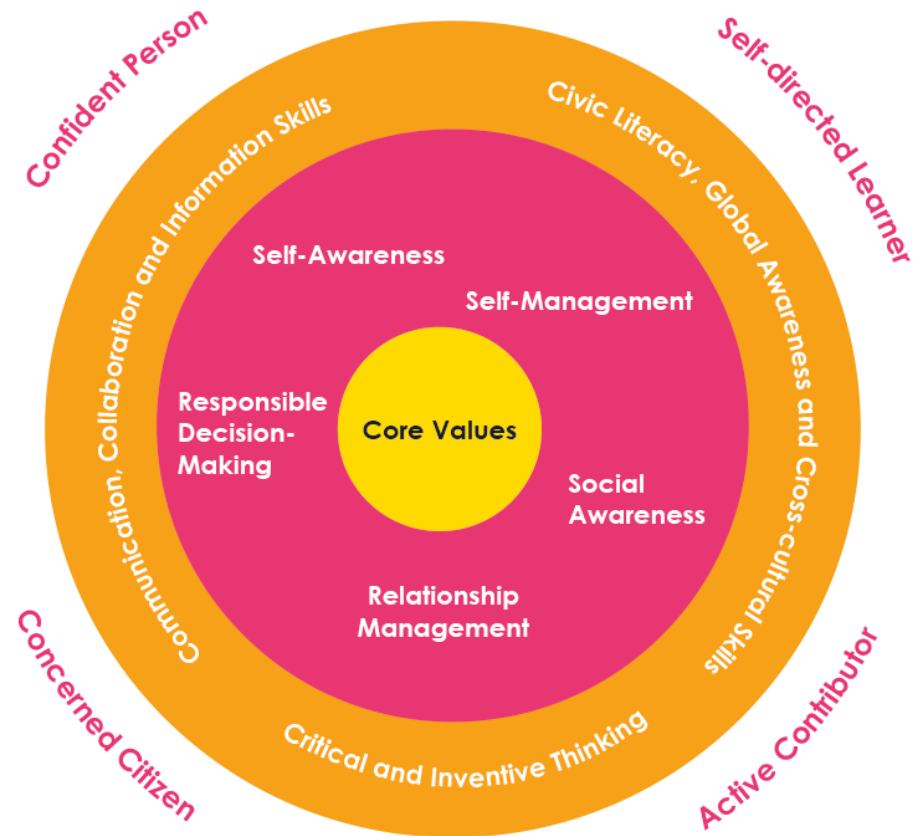
P5 PARENT ENGAGEMENT SESSION 2024



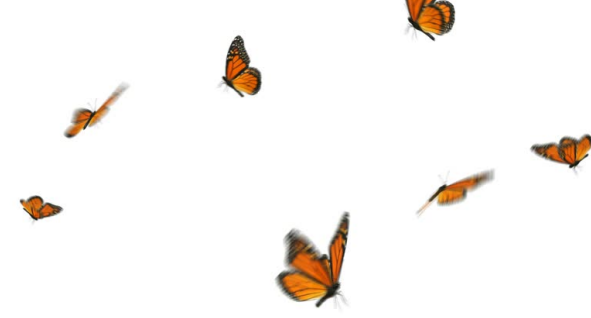
**Princess Elizabeth
Primary School**



Our Total Curriculum for Student Outcomes



FOCUS ON YOUR CHILD'S HOLISTIC DEVELOPMENT



Is my child coping well in class?

How is my child interacting with others?

How can I grow my child's interests and strengths?

How can I work together with the teachers to help him?

Is my child adopting healthy habits in school?



As parents, you can:

Encourage Joy of Learning by not over-emphasising academic performance.

Focus on your child's learning journey, rather than comparing them to others.

With these changes, your child will:

- Have more time and space to deepen learning
- Better enjoy the process of learning
- Develop dispositions for lifelong learning



Don't focus only on results

Encourage them to pursue their strengths, interests and try new things.



Set goals together

Talk about their strengths, abilities and goals and how they can achieve them.



Transition to P5





P4 to P5: Why did my child's grades drop so drastically?



Increase in content knowledge across subjects

- Though the number of subjects does not increase, the amount and depth of information and content knowledge increases
- With the introduction **new topics and new concepts**, students are experiencing increased level of difficulty in content compared to previous years.
- Some of the subjects having additional components and more complex questions require specific sets of comprehension and answering skills.



	P4	P5/6
EL	<p>Reading Comprehension (220-300 words in length)</p> <p>A variety of items: 7 questions 10 marks</p>	<p>Reading Comprehension (330-450 words in length)</p> <p>A variety of items: 10 Questions 20 marks</p>
EL	<p>Composition – Guided writing with 3 pictures</p> <p>(20 marks- 20%)</p> <p>(50 mins)</p>	<p>Composition – Situational Writing + Continuous Writing</p> <p>(55 marks- 25%)</p> <p>(1 hr 10 mins)</p>

P4

1 Exam paper (1 hour 45mins)

Structured/ Long Answers questions: 5 questions 20 marks

P5

2 Exam papers:

Paper 1- without calculator (1h) +

Paper 2 – with calculator (1h 30min)

Paper	Booklet	Item Type	Number of questions	Number of marks per question	Total marks	Duration
1	A	Multiple-choice	10	1	10	1 h
			5	2	10	
	B	Short-answer	5	1	5	
			10	2	20	
2		Short-answer	5	2	10	1 h 30 min
		Structured/ Long-answer	12	3, 4 or 5	45	
Total			47	-	100	2 h 30 min

Structured/ Long Answers questions: 17 questions 55 marks

	P4	P5/6
CL	<p>Reading Comprehension 1 passage</p> <p>5 questions 10 marks</p>	<p>Reading Comprehension 2 Passages</p> <p>11 Questions 32 marks</p>
CL	<p>Composition – Guided writing with 4 picture prompt and helping words.</p> <p>(15%)</p> <p>(40 mins)</p>	<p>Composition – 6 Picture Composition or Topic</p> <p>(40 marks- 40%)</p> <p>(50min)</p>



Balancing a busy schedule

Your child is given the huge task of **balancing schoolwork, CCA activities, tuition and family time**. Without proper time management, he/she may not be able to keep track of the workload and will not be able to complete them.



DSA

DIRECT SCHOOL ADMISSION

2021

11

2022

13

2023

32

DIRECT SCHOOL ADMISSION (DSA)

How does it work?

- Allows students to apply to schools before taking the PSLE
- Allows students to apply based on their talent in sports, CCAs and specific academic areas

How does it work?

If admitted to Secondary schools via DSA, students are

- not allowed to submit school choices during Sec 1 posting process,
- unable to seek for transfer to another school after the release of PSLE results.

Talent Areas

Application can be made based on wide range of talent areas, including

- Sports and games,
- Visual, literary and performing arts,
- Debate and public speaking,
- Science, mathematics and engineering,
- Uniformed groups and
- Leadership e.g. prefects.



**We need to work
together to ensure the
best for your child.**

All the Best In Your Journey!