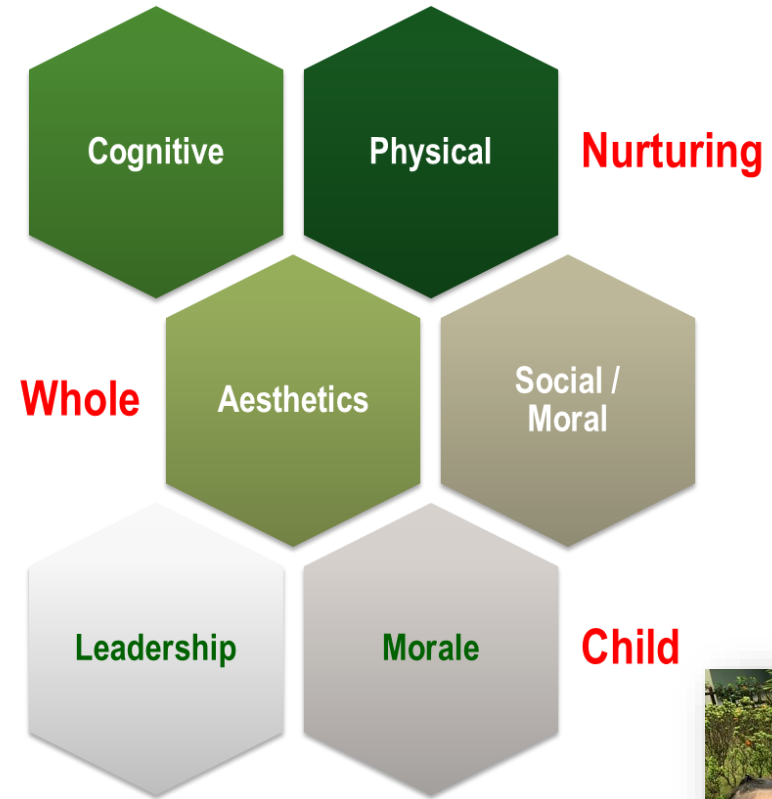
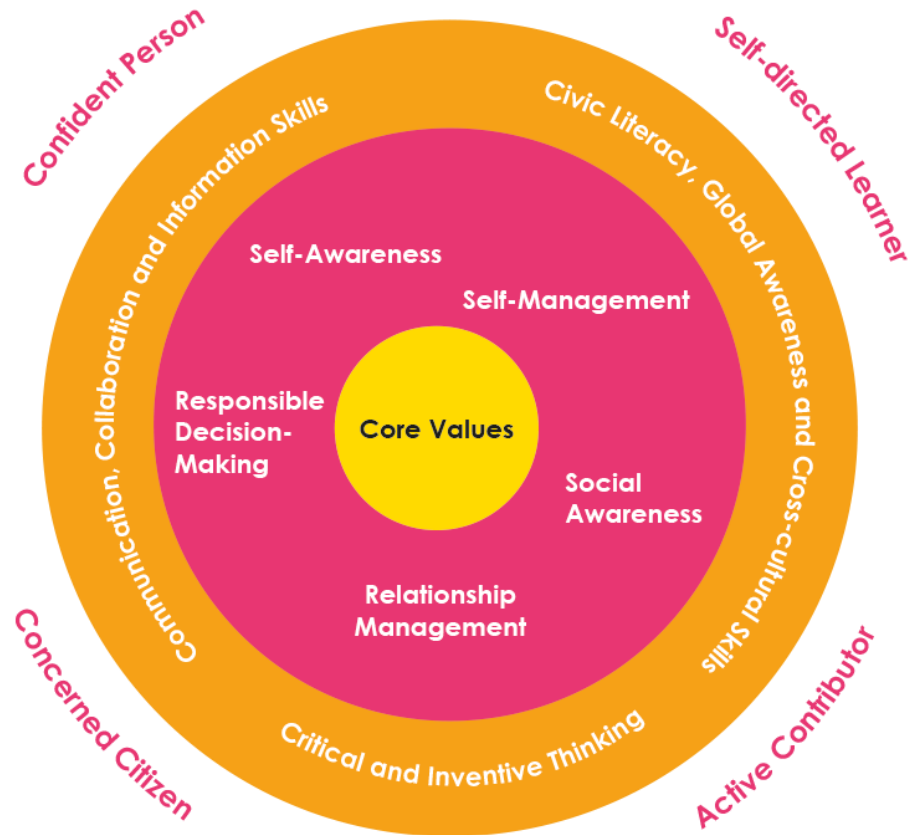


P4 PARENT ENGAGEMENT SESSION 2024

26 January 2024



Our Total Curriculum for Student Outcomes



They don't know English; we teach them,
They don't know Mathematics; we teach them,
They don't know Science; we teach them,
They don't know Mother Tongue; we teach them,
If they don't know how to behave; we teach them.



Positive Behavioural Interventions and Supports (PBIS)

Positive Behaviour Expectations

Self-discipline

- Be ready for lesson
- Hand in homework on time
- Take care of your belongings

Empathy

- Take turns to speak
- Use kind words
- Think for others

Respect

- Listen attentively
- Keep hands and feet to myself
- Use appropriate voice level

- a proactive approach that emphasises **prevention of behaviour problems** through **teaching of positive behaviours** and the **creation of a positive school culture**.
- aims to help students achieve **positive social, emotional, and academic outcomes** in school.

Appropriate Voice Level	
4	When we are in danger 
3	When we want everyone to hear us 
2	When we want the people at our table to hear us 
1	When we want the person next to us to hear us 
0	When we should be quiet 



FOCUS ON YOUR CHILD'S HOLISTIC DEVELOPMENT

Is my child coping well in class?

How is my child interacting with others?

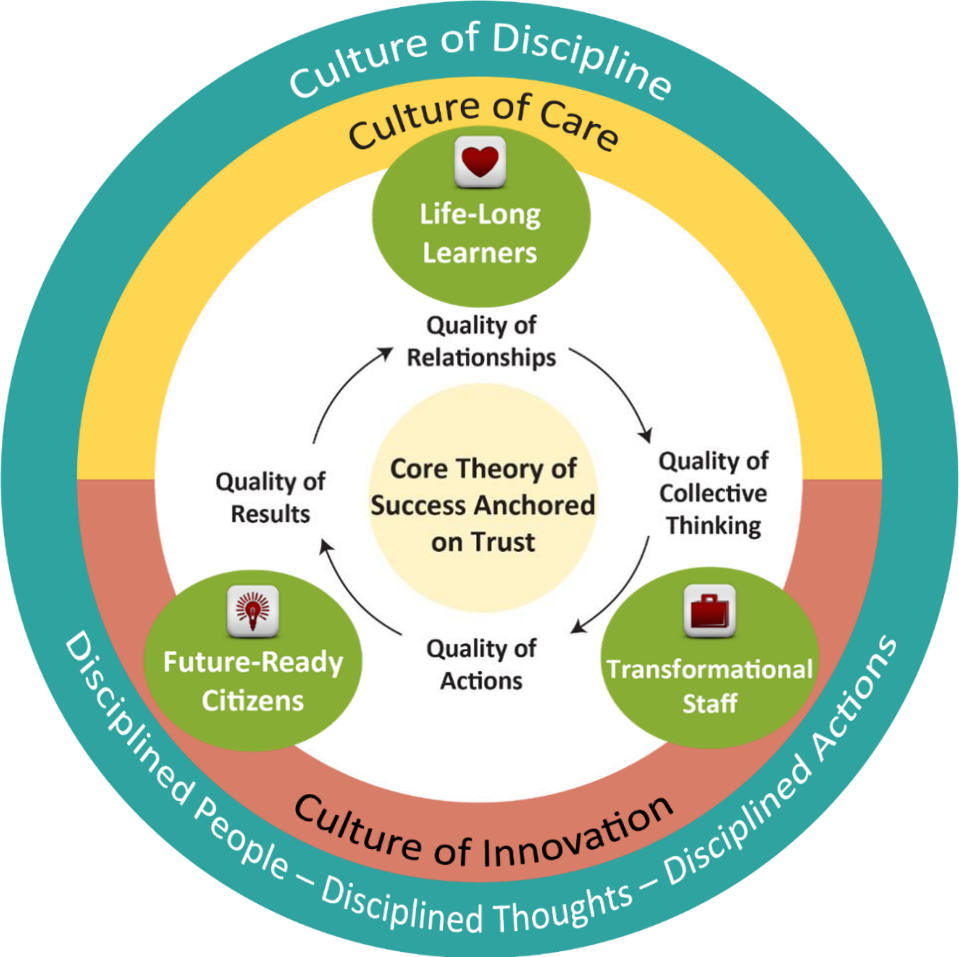
How can I grow my child's interests and strengths?

How can I work together with the teachers to help him?

Is my child adopting healthy habits in school?



ENDURING SCHOOL CULTURE BASED ON THE CORE THEORY OF SUCCESS



As parents, you can:

- Encourage Joy of Learning by not over-emphasising academic performance.
- Focus on your child's learning journey, rather than comparing them to others.
- With these changes, your child will:
 - Have more time and space to deepen learning
 - Better enjoy the process of learning
 - Develop dispositions for lifelong learning



Don't focus only on results

Encourage them to pursue their strengths, interests and try new things.



Set goals together

Talk about their strengths, abilities and goals and how they can achieve them.



Transition to P5



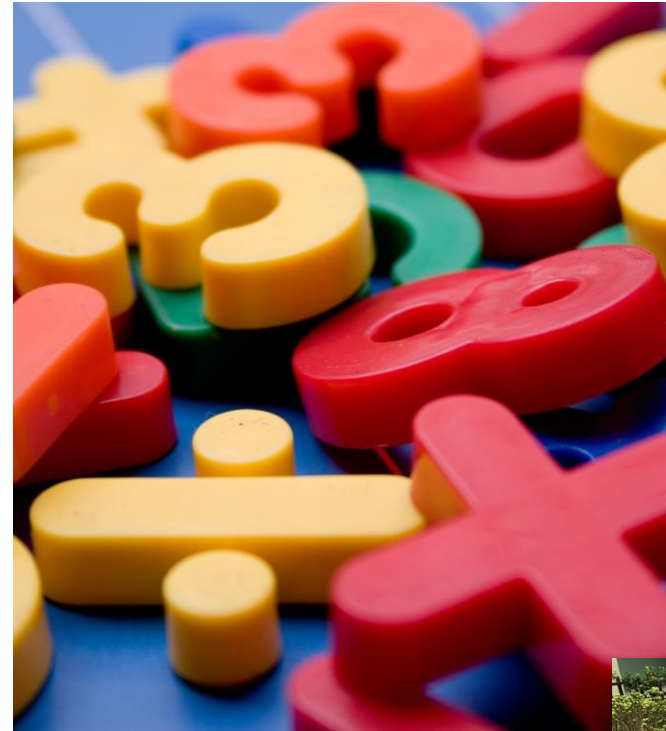


P4 to P5: Why did my child's grades drop so drastically?



Increase in content knowledge across subjects

- Though the number of subjects does not increase, the amount and depth of information and content knowledge increases
- With the introduction **new topics and new concepts**, students are experiencing increased level of difficulty in content compared to previous years.
- Some of the subjects having additional components and more complex questions require specific sets of comprehension and answering skills.



	P4	P5/6
EL	<p>Reading Comprehension (220-300 words in length)</p> <p>A variety of items: 7 questions 10 marks</p>	<p>Reading Comprehension (330-450 words in length)</p> <p>A variety of items: 10 Questions 20 marks</p>
EL	<p>Composition – Guided writing with a picture prompt and helping words.</p> <p>(20 marks- 20%)</p> <p>(50 mins)</p>	<p>Composition – Situational Writing + Continuous Writing</p> <p>(55 marks- 25%)</p> <p>(1 hr 10 mins)</p>

P4

1 Exam paper (**1 hour 45mins**)

Structured/ Long Answers questions: 5 questions 20 marks

P5

2 Exam papers:

Paper 1- without calculator (1h) +

Paper 2 – with calculator (1h 30min)

Paper	Booklet	Item Type	Number of questions	Number of marks per question	Total marks	Duration
1	A	Multiple-choice	10	1	10	1 h
			5	2	10	
	B	Short-answer	5	1	5	
			10	2	20	
2		Short-answer	5	2	10	1 h 30 min
		Structured/ Long-answer	12	3, 4 or 5	45	
Total			47	-	100	2 h 30 min

Structured/ Long Answers questions: 17 questions 55 marks

	P4	P5/6
CL	<p>Reading Comprehension 1 passage</p> <p>5 questions 10 marks</p>	<p>Reading Comprehension 2 Passages</p> <p>(11 Questions 32 marks)</p>
CL	<p>Composition – Guided writing with 4 picture prompt and helping words.</p> <p>(15%)</p> <p>(40 mins)</p>	<p>Composition – 6 Picture Composition or Topic</p> <p>(40 marks- 40%)</p> <p>(50min)</p>

SUBJECT-BASED BANDING (PRIMARY)

OFFERING DIFFERENT SUBJECT COMBINATIONS



SUBJECT-BASED BANDING (PRIMARY)

- Provides **greater flexibility** by offering them the option of Standard and Foundation Subjects, **depending on their strengths.**
- Allow students to **focus on and stretch their potential** in the subjects they are **strong in** while **building up the fundamentals** in the subject they need more support in.



SUBJECT-BASED BANDING (PRIMARY)

- The new PSLE scoring system **will not change** the considerations for deciding on a student's subject combination.
- Schools will continue to recommend based on the following:
 - Student's aptitude, motivation and performance in each subject;
 - Student's ability to cope with a particular subject combination; and
 - Whether the subject combination focuses sufficiently on literacy and numeracy, and facilitates the student's articulation to secondary school and beyond.



SUBJECT-BASED BANDING (PRIMARY)

- Offering subjects at Foundation level is **not a disadvantage to the students**. It enables them to focus on building up strong fundamentals in these subjects and better prepares them for progression to secondary school.



GRADING SYSTEM FOR PRIMARY 4

Band	Mark Range	Descriptor
1	85 - 100	Is very good in the subject
2	70 - 84	Is good in the subject
3	50 - 69	Has an adequate grasp of the subject
4	0 - 49	Has not met the minimum requirements for the subject



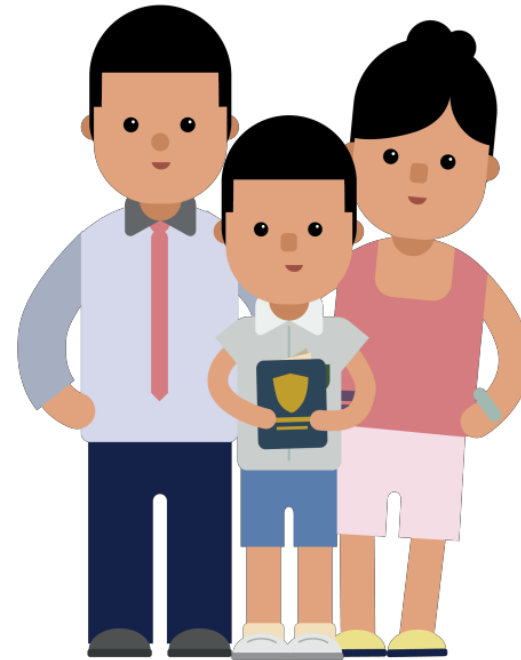
HOW DOES SUBJECT-BASED BANDING WORK?

@ PRIMARY 4

Student sits for
school-based examinations

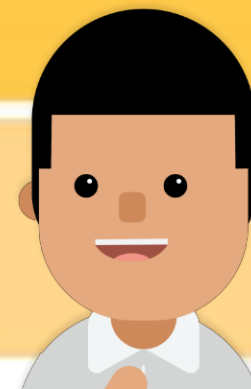
School recommends a subject
combination based on the
student's results.

Parents fill up an option form
indicating the preferred combination.



HOW DOES SUBJECT-BASED BANDING WORK?

If your child (for P4 exam)	Your child may be recommended to take
Passes all 4 subjects and performs very well in Mother Tongue Language	4 standard subjects + Higher Mother Tongue Language
Passes all 4 subjects	4 standard subjects
Passes 3 subjects	4 standard subjects



HOW DOES SUBJECT-BASED BANDING WORK?

If your child (for P4 exam)

Your child may be recommended to take

Passes 2 subjects or less

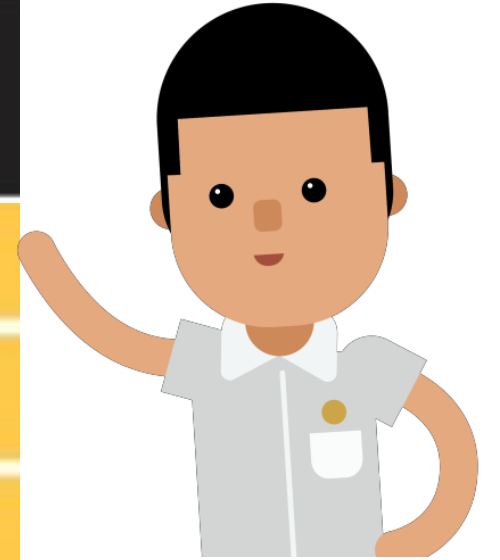
4 standard subjects; or

3 standard subjects + 1 other foundation subject; or

2 standard subjects + 2 other foundation subjects; or

1 standard subject + 3 other foundation subjects; or

4 foundation subjects



HOW DOES SUBJECT-BASED BANDING WORK?

@ PRIMARY 5

Student takes subject combination chosen by parents

School assesses student's ability to cope with the current subject combination at the end of the year. Adjustments to the number of standard and foundation subjects can be made, if necessary.

At the end of P5, school will assess and **decide** whether the student should continue or change the subject combination. Parents can no longer exercise their options.



P4 Students Opting for Higher Mother Tongue Languages (HMTL) in P5/P6



Syllabus for HMTL – Purchase of Books

Higher Chinese Language (HCL)	Higher Malay Language (HML)/ Higher Tamil Language (HTL)
<p><u>Purchase only HCL</u> textbooks/activity books</p> <p><u>Need not purchase CL</u> textbooks/ activity books</p>	<p><u>Purchase both</u></p> <ul style="list-style-type: none">• ML & HML textbooks & activity books• TL & HTL textbooks and activity books



Curriculum Hours for HMTL

Students taking HMTL are to attend two periods (1 hour) of HMTL lessons weekly outside normal curriculum time



Considerations for taking HMTL

- HMTL students are required to sit for **both** MTL and HMTL exams at PSLE
- Parents may also wish to consider the interest and strengths of the child when opting for HMTL
- If the student is **doing well** in English Language (EL), Mathematics (M), and Science(S) and is **excelling** in MTL, they will be recommended by the school to opt for HMTL for greater exposure and appreciation for the language
- If the student is unable to cope with English Language(EL), Mathematics(M), Science(S) and is not excelling in MTL, they will not be recommended by the school to opt for HMTL and are strongly advised to focus on (i) passing E,M,S (ii) do well for MTL.



Advantages of taking HMTL

- Achieve higher levels of language proficiency and cultural knowledge
- Need not offer H1 MTL at JC level when a student has obtained a D7 or better in HMTL at GCE O level
- Career opportunities in future like MT teacher, translators at courts / parliament, etc...



Assessment Format :

Mother Tongue Language vs Higher Mother Tongue Language

MTL Assessment Format

	Component	Weighting
Composition	Write an essay based on a given topic or Picture Composition	20%
Language Use and Comprehension	- Language Application(MCQ) - Cloze Passage(MCQ) - Reading Comprehension(MCQ) - Reading Comprehension (Open-ended) - Complete the dialogue(MCQ)	45%
Listening Comprehension	After listening to dialogues, instructions, stories and news, answer MCQ	10%
Oral	Reading Aloud Conversation (after viewing a video stimulus)	25%

No Listening and Oral Components in HMTL assessment,

Only Composition and Language Use

HMTL Assessment Format

	Component	Weighting
Composition	Write an essay based on a given topic or Complete an essay based on a given beginning	40%
Language Use and Comprehension	- Cloze Passage(MCQ) - Word Correction(Open-ended) - Reading Comprehension(Open-ended) - Reading Comprehension(Open-ended)	60%



Parent's Option for student to take HMTL

- Student should take the P5 HMTL curriculum till the end of the year









USE OF HCL FOR ADMISSION INTO SAP SCHOOLS



THIS HCL POSTING ADVANTAGE FOR ENTRY TO SAP SCHOOLS WILL CONTINUE

- Students will be ranked taking into account their performance in HCL
 - Their HCL performance will be indicated in their PSLE Score
- This posting advantage applies before the tie-breakers for S1 posting

			<u>PSLE Score</u>	
1st		7	NO HCL	7
2nd		8	DISTINCTION	8D
3rd		8	MERIT	8M
4th		8	PASS	8P
5th		8	NO HCL	8
6th		9	DISTINCTION	9D



ELIGIBILITY CRITERIA FOR HIGHER MOTHER TONGUE LANGUAGE (HMTL)

- The eligibility criteria for taking HMTL ensures that students can cope with the higher academic load.

ELIGIBILITY CRITERIA FOR HMTL

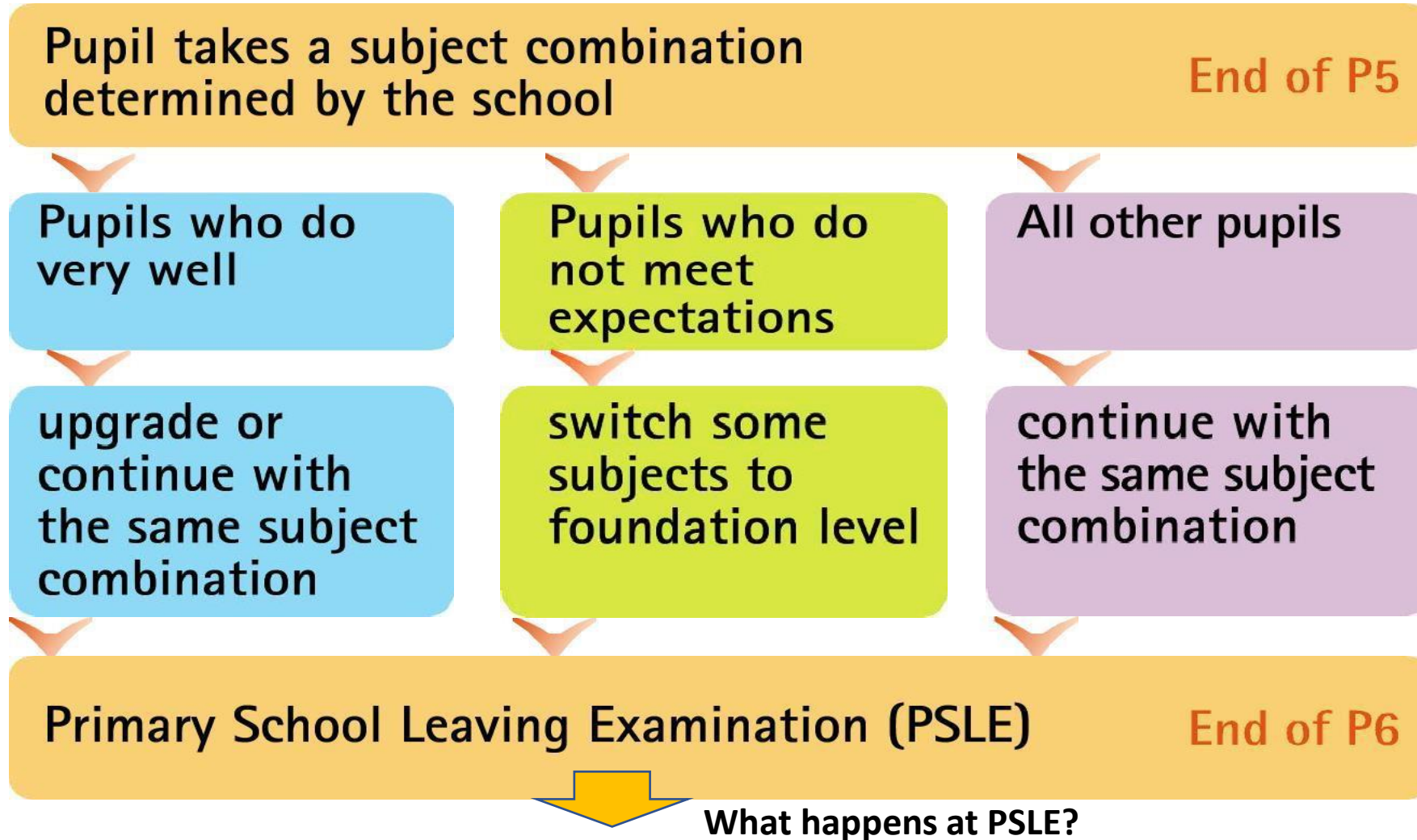
- (i) An overall PSLE Score of 8 or better**
or
- (ii) An overall PSLE Score of 9 to 14 (inclusive); and attain**
 - **AL 1 / AL 2 in MTL or**
 - **Distinction / Merit in HMTL**

- For students who do not meet the above criteria, secondary schools will have the flexibility to offer HMTL to students if they are assessed to have high ability and interest in MTL and are able to cope with the learning load required.



IN SUMMARY

HOW DOES SUBJECT-BASED BANDING WORK?



WHAT ARE ACHIEVEMENT LEVELS (AL)?

WHY ARE THE BANDS UNEVEN?

- Students with similar scores in each subject are grouped into scoring bands measured in 8 ALs.
- AL bands and mark ranges are set based on the learning objectives of the curriculum and mirror the way we learn.

When we learn something new, after some initial practice, we often find ourselves improving significantly.

As we get better, the improvements become small steps, and finally, as we reach a high level, we inch just a little further, even after much learning and practice.

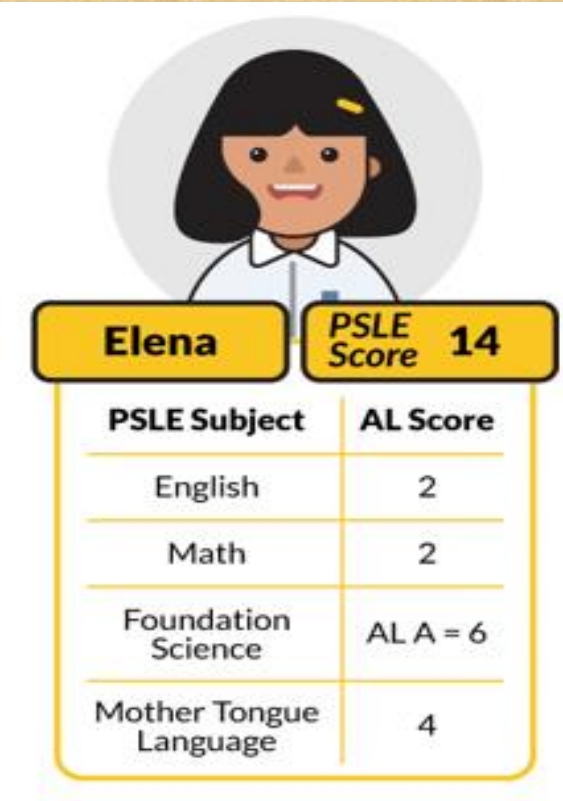
The ALs were designed to reflect this reality of learning. They help educators, students, and parents know how ready students are to access the curriculum at the next level.

AL	RAW MARK RANGE
1	≥ 90
2	85 – 89
3	80 – 84
4	75 – 79
5	65 – 74
6	45 – 64
7	20 – 44
8	< 20



HOW DOES THE PSLE SCORING SYSTEM WORK?

- The overall PSLE Score is made up of 4 subject Achievement Levels (ALs).
- The PSLE Score can range from 4 to 32, with 4 being the best.



Elena PSLE Score **14**

PSLE Subject	AL Score
English	2
Math	2
Foundation Science	ALA = 6
Mother Tongue Language	4



GRADING OF FOUNDATION SUBJECT GRADES

- Foundation subject grades are graded in scoring bands from **AL A to C**.
- To derive a student's overall PSLE Score for S1 Posting, AL A to AL C for Foundation level subjects are **mapped to AL 6 to AL 8 of Standard level subjects respectively**.
- This mapping is based on the learning and assessment load of the subjects and informs students of how ready they are for the curriculum in secondary school.

FOUNDATION LEVEL AL	FOUNDATION RAW MARK RANGE	EQUIVALENT STANDARD LEVEL AL
A	75 – 100	6
B	30 – 74	7
C	< 30	8



Timeline

2020

Start of Full SBB pilot in 28 secondary schools

2021

First cohort of Primary 6 students undergo new PSLE scoring and Secondary 1 (S1) posting system

2022-2024

Progressive roll-out of Full SBB to more secondary schools

2027

First cohort of students to sit for a common national examination, and receive a common national certification

2028

First cohort of students to be admitted to Post-Secondary Education Institutes (PSEIs) under revised admissions criteria

Removal of Express, Normal(Academic) [N(A)] and Normal(Technical) [N(T)] courses from 2024

- The Express, N(A) and N(T) courses will be removed
- Students posted into secondary schools through three scoring bands

Reference : <https://www.moe.gov.sg/microsites/psle-fsbb/full-subject-based-banding/secondary-school-experience.html>

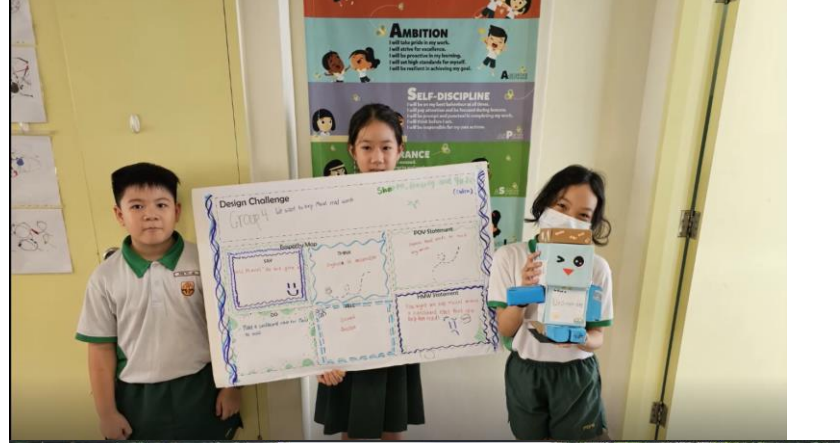


2024 P4 Level Programmes

- 2D 1N Camp@PEPS
- Learning Journeys:
 - ✓ Art Museum-based learning@National Gallery
 - ✓ Kreta Ayer Heritage Gallery
 - ✓ Geylang Serai Heritage Gallery
- Coding for Fun
- Self-Discipline Day (SDD)
- LOVE Experience (Dyslexia)
- Science Learning Journey to Gardens By the Bay



2024 P4 Level Programmes





Direct School Admission (DSA)



DIRECT SCHOOL ADMISSION

2021

11

2022

13

2023

32





What is DSA-Sec?

DSA-Sec allows Primary 6 students an opportunity to seek admission to a secondary school based on a diverse range of talents and achievements that may not be demonstrated at the Primary School Leaving Examination (PSLE).



**CONFIDENT
LEARNERS
READY FOR
THE FUTURE**



Visual,
literary
and
performing
arts

Debate &
public
speaking

Leadership:
e.g. prefects

Uniformed
groups

Languages
and
humanities

Sports and
games

Science &
Mathematics



What are schools looking for?

Schools are generally looking candidates with:

Talent, Passion & Commitment

- Schools may look at achievements and participation.
- Schools may also conduct trials or selection camps to identify students with strengths, or sound potential, in particular areas.

Strong Personal Qualities

- Schools may conduct interviews

Good Academic Fit

- Schools may look at primary school results to ensure students can benefit from the pace of learning.

*Encourage your child to be sincere, be genuine, be themselves –
If you are a good fit for the school, it will show.*





**Let's work together to
ensure the best for your
child.**

All the Best In Your Journey!

